

Supported by



IDRC | CRDI

International Development Research Centre
Centre de recherches pour le développement international

Canada

Implemented by



**ATHENA
INFONOMICS**



RESEARCH PROGRAM ON
Water, Land and
Ecosystems



RURBAN Platform - A Unique Governance Mechanism for Integrated Water Management



IAdapt

Integrated Rural Urban Water
Management for Climate Based
Adaptations in Indian Cities

The RURBAN Platform

The Rural Urban (RURBAN) Platform is an active cross-sectoral network to facilitate inter-agency collaboration and participatory decision making on water management. It consists of decision makers and practitioners from relevant government departments at different levels and civil society. This unique platform brings together rural and urban stakeholders to develop climate resilient management plan for their shared water resources.

RURBAN Facilitates



**Exchange of
information**



**Collaborative
Actions**



**Formulation and
Design of Plans**

Why Do We Need RURBAN Platform?

Water transcends boundaries and its management requires action at multiple scales and involves multiple stakeholders with competing needs. Climate change can add to this complexity. Hence, there is a need to address water management at a catchment level, going beyond administrative boundaries.

Ensuring water management at a catchment level requires cooperation and collaboration among rural and urban users, industry, governmental agencies at different levels, private sector and others.

The RURBAN platform provides a space and guiding principles to facilitate debate, negotiation and collaboration on integrated water management, particularly in the context of a changing climate.

What Does RURBAN Look Like

The RURBAN platform is a multi stakeholder team consisting of rural and urban stakeholders. It provides a collaborative process to guide and support the implementation of climate adaptive water management.

RURBAN Members



Mayor



Commissioner



Municipal
Councillors



District
Authority



Health
Department



Engineering
Department



Planning
Department



Irrigation
Department



Water Supply and
Sanitation Department



Block Development
Office



Institutions



Ground Water
Board



Water Resource
Department



Citizens



NGOs



SHGs

Special Invitees



Members of
Parliament



Members of
Legislative
Assembly



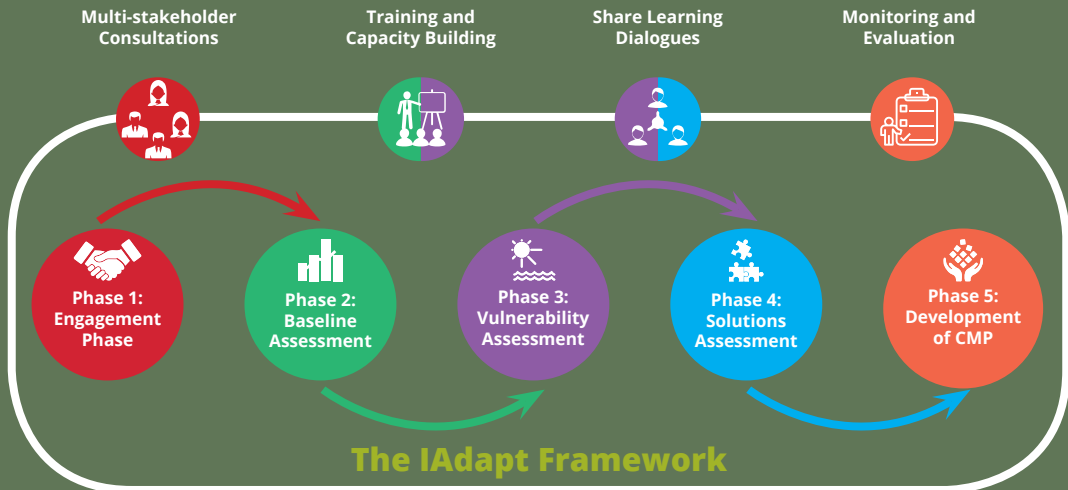
Members of
Legislative
Council



Media

RURBAN Engagement

RURBAN platform members can engage in different phases of the IAdapt Framework as shown below:



Contact

ICLEI - Local Governments for Sustainability, South Asia

C-3, Lower Ground Floor, Green Park Extension, New Delhi - 110016, India

Tel: +91 - 11 - 4974 7200; Fax: +91 - 11 - 4974 7201; Email: iclei-southasia@iclei.org, Website: <http://southasia.iclei.org/>

This work was carried out with the aid of a grant from the International Development Research Centre, Ottawa, Canada. The views expressed herein do not necessarily represent those of IDRC or its Board of Governors.