

Enabling a 1.5°C Future: Strategies for Sustainable and Resilient Transport Systems

9 December 2024 | Manila, Philippines

Pre-Event of the High-Level 16th Regional
Environmentally Sustainable Transport (EST) Forum





Regional cooperation: Leadership Group for Clean Transport in Asia

Soumya Chaturvedula

Team Lead, Asia LEDS Partnership and
Director, ICLEI South Asia



Raising Ambition through Regional Cooperation in Transport Sector



Agenda

- *The Global Climate Action Partnership*
- *Asia LEADS Partnership*
 - *Leadership Group- Clean Transport Asia*
- *Future Work- LG-CTA countries*
- *Questions?*

What is The Global Climate Action Partnership (GCAP)

The Global Climate Action Partnership (GCAP) is a global network accelerating the transition to resilient and inclusive net-zero economies through innovative solutions and collaborative peer learning.



**Global Climate
Action Partnership**
regional leadership, global change



Launched
in 2011



Over 4,500
climate
leaders



Peer learning,
technical
collaboration,
and information
exchange



Implementation
of ambitious
LTS and NDCs



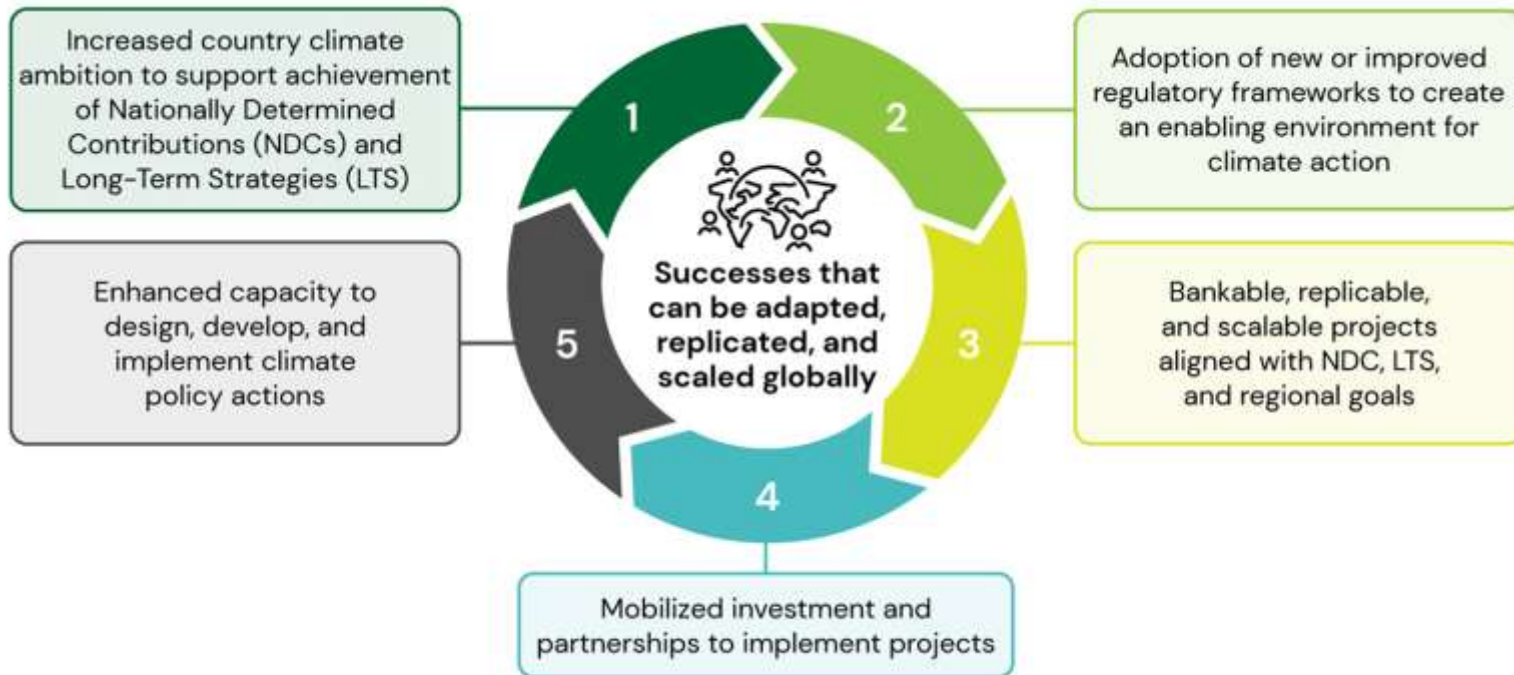
Country and
demand-
driven focus
areas



Regional
platforms in
Africa, Asia, Latin
America, and the
Caribbean

What is The Global Climate Action Partnership (GCAP)

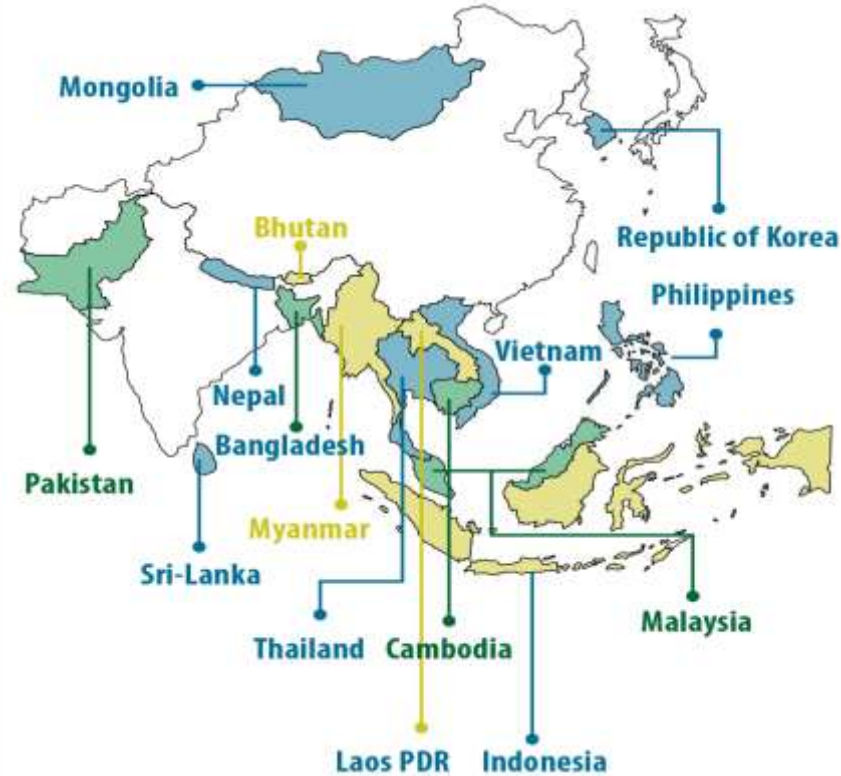
Accelerate the implementation of ambitious and realistic NDCs and LTS actions that achieve resilient, just and inclusive low emission and net zero transitions



What is Asia LEADS Partnership (ALP)

The **Asia Low Emission Development Strategies (LEADS) Partnership (ALP)** launched in **September 2012** is a voluntary regional network that promotes and enables low-emission, climate-resilient development across the Asia and Pacific region through peer-to-peer learning, knowledge sharing, and improved coordination and cooperation among governmental and non-governmental partners.

Comprises 1273 members (421 organizations and 852 individuals), from 15 Asian countries



Objectives

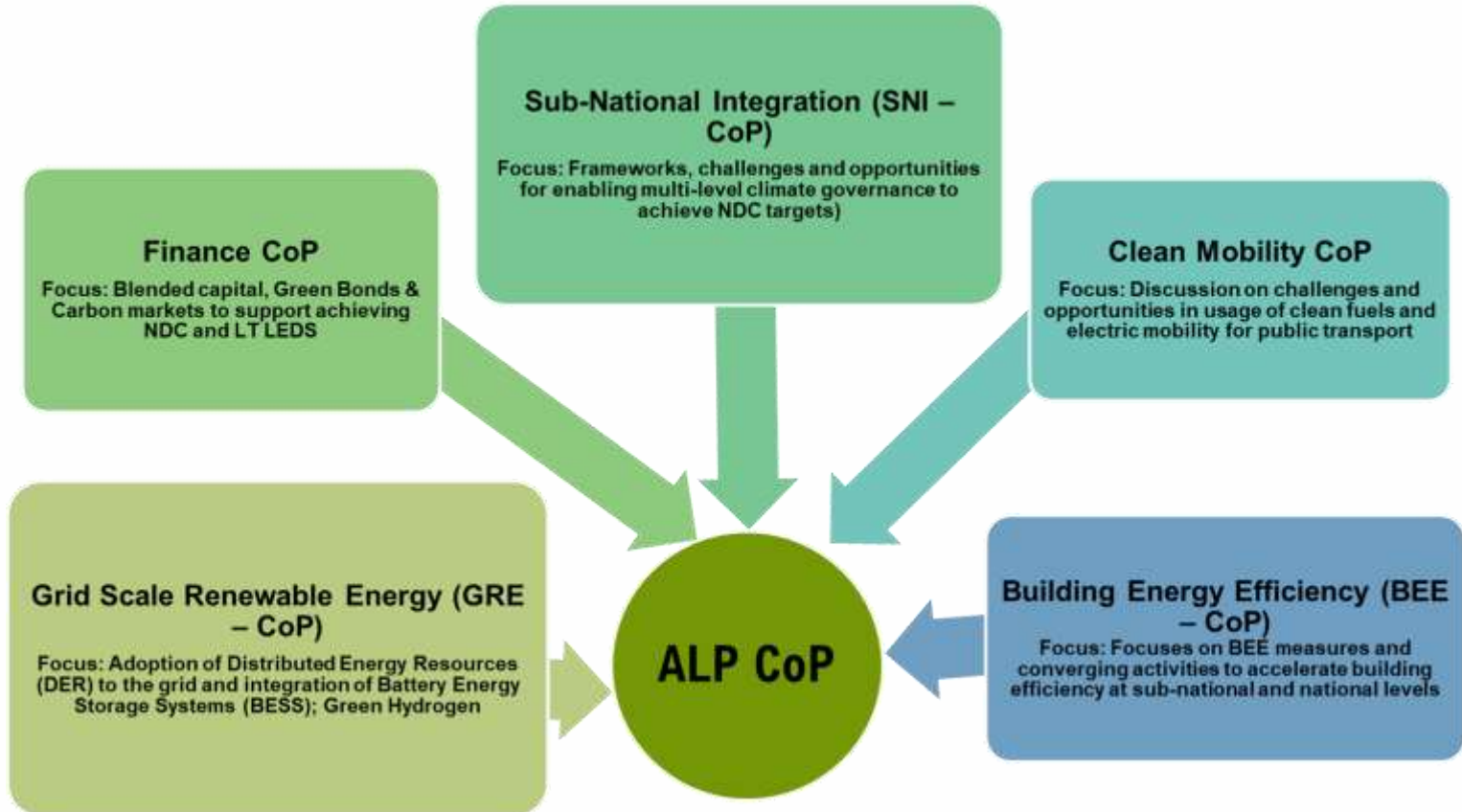
Facilitate enhanced coordination, collaboration, and partnerships

Identify and disseminate tools, models, approaches, and best practices in priority NDC/LTS/LEDS topics to enable peer-to-peer learning and application

Foster capacity building of practitioners to make Asia a leader in designing and implementing NDC/LTS/LEDS

Strengthen support for NDC/ LTS/LEDS by catalyzing leaders of change and raising awareness about the benefits on these topics

ALP Community of Practice



Leadership Group- Clean Transport Asia (LG-CTA)



Regional Cooperation on Transport

LGCTA Outputs & Communique

Outcome

- High-level Statement on **Communique on Regional Technical Cooperation for Clean and Sustainable Land Transport in Asia**

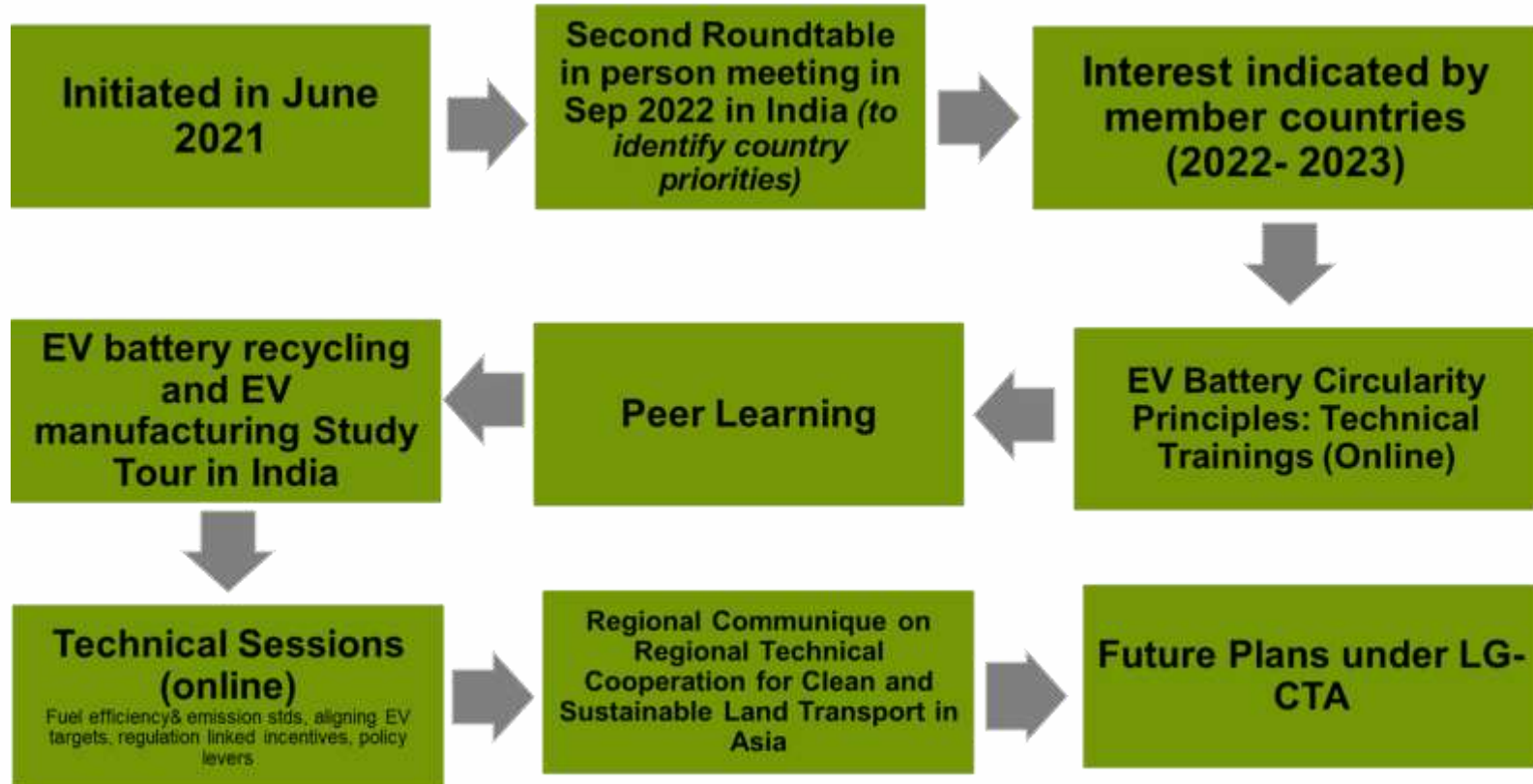
– All member countries to endorse the collective statement at EST Forum/COP29

- Identify key clean transportation policy actions for member countries to be considered
- Lessons from policy and regulatory best practices in the region

Additional outcomes

- Country specific challenges/needs to be documented for future action
- Leverage synergies with other international platforms
- Facilitate partnerships and collaborations for implementing policy actions with support from regional MDB facilities

Journey of LG-CTA



**LG-CTA member countries have been a part of ALP Forum (Aug 2024) and GCAP Forum (Oct 2024) and have benefitted from technical sessions*

Communique on Regional Technical Cooperation for Clean and Sustainable Land Transport in Asia

- Working together across multiple technical sessions, The LGCTA members have agreed that the given six critical action areas are the most important for regional cooperation in in Asia to effectively accelerate clean and sustainable transport
- Countries remain committed to cooperating through LG-CTA for accelerating the transformation to sustainable and clean land transport regionally in Asia
- Ambitions identified under the communique are effective pathways to implement learnings from Paris Agreement & COP 28

Public and collective transport, railway, walking, cycling and micro-mobility	Intermodal, low-carbon freight transport systems	Increased share of EVs in 2/3Ws, cars, trucks and buses
EV charging infrastructure and safe and resilient grid integration	Robust fuel efficiency and emission standards	Renewable energy and zero emission energy sources for all transport modes

Way Forward: Strengthening Regional Cooperation

- Expansion of modernised, affordable, accessible and safe public and collective transport, railway, walking, cycling and micro-mobility infrastructure and networks.
- Deployment of intermodal, low-carbon and efficient freight transport infrastructure, operations, vehicles and fuels.
- Increased sales of electric vehicles (EV) across two/three-wheelers, cars, trucks and buses towards a share of 30% of total vehicle sales.
- Expansion of public EV charging infrastructure and safe and resilient grid integration.
- Reduction of CO₂ emissions from transport beyond 2019 levels and adoption of Euro VI emission standards for all types of vehicles by 2030.
- Integrated policies and regulations to mandate and incentivise the use of renewable energy and renewable fuels for all transport modes, e.g., renewable electricity, renewable fuels and renewable-based fuels.

Future Work Program for LG-CTA

- **In-country workshop series:** e.g. National policies on low-carbon freight
- **Regional workshop series:** e.g. Integrated mobility plans, EV adoption roadmaps and policies, Guidelines for EV charging infrastructure – operations and maintenance, RE for EV, Grid integration of RE, Financing the RE/EV transition, Gender inclusive and accessible PT infrastructure
- **Study visits:** Planning and policy good practices, example implementation of NDC actions, examples of innovative design and manufacture
- **Case Studies:** India's EV journey, Decarbonisation of Freight, Gender inclusive and accessible design
- **Technical Assistance:** (see next slide)

Example Technical Assistance for LG-CTA countries

Example TA: Short and Medium term	Action Area Identified as per communique	Example TA: Short and Medium term	Action Area Identified as per communique
<ol style="list-style-type: none"> 1. Comprehensive framework for public transport 2. Digitisation of transport services 3. Design standards and guidelines for gender inclusive and accessible PT 4. Stakeholder engagement strategies to promote the import of new vehicles versus the import of old vehicles 	<p>Public and collective transport, railway, walking, cycling and micro-mobility</p>	<ol style="list-style-type: none"> 1. EV Charging Infrastructure Planning 2. EV Battery Recycling Standards and Policy 	<p>EV charging infrastructure and safe and resilient grid integration</p>
<ol style="list-style-type: none"> 1. Action Plan for decarbonizing long range freight movement 2. EV technology for freight movement 	<p>Intermodal, low-carbon freight transport systems</p>	<ol style="list-style-type: none"> 1. Integrated EV and energy policy 2. Techno-economic feasibility of blended biofuels 3. GHG emissions inventory in the transport sector – methodology and procedures 	<p>Renewable energy and zero emission energy sources for all transport modes</p>
<ol style="list-style-type: none"> 1. EV Adoption Roadmaps and Policies 2. Electric mobility policy in sub-national governments 	<p>Increased share of EVs in 2/3Ws, cars, trucks and buses</p>	<ol style="list-style-type: none"> 1. Fuel efficiency standards and monitoring framework 2. Fuel emissions standard testing kits – know-how and guidance document 	<p>Robust fuel efficiency and emission standards</p>

Questions?

Thank you!

For any questions, please write at
alpsecretariat@iclei.org, saisiddhartha.nandamuri@iclei.org,
avantika.arjuna@iclei.org , soumya.chaturvedula@iclei.org